

An Analysis of Gender Bias Reflected in Short Animation Movies: *Shattered, Witches, and Purl*

Saiful Khaki

saifulkhaki99@gmail.com

Universitas Sains Al-Qur'an, Wonosobo, Indonesia

Abstract

*Gender bias is preference or unfair treatment of someone based on their gender. Even though our society has made great progress in terms of gender equality, there are still many cases of gender bias that occur. This journal will explore some examples of gender bias that still exist in our daily lives. There are two problems discussed in this research, those are; how is gender bias reflected in the short animation movies: *Shattered, Witches, and Purl* and how is women's struggle as the result of gender bias reflected in the short animation movies: *Shattered, Witches, and Purl*. The research uses descriptive qualitative method to analysed the short animation movies: *Shattered, Witches, and Purl* as the objective research. The collecting data of the research method includes watching and reading, identifying, classifying, and selecting. The analysing data of the research method by used displaying, explaining, and interpreting. In this research, the researchers found the element of gender bias. It is reflected through the movies that women are disproportionately impacted negatively by the practice of gender bias. Stereotypes that have existed for a long time contribute to gender bias. Women are referred to as feminists, while men are referred to as masculine. Such generalizations in some cases cause ladies to need to wear something attractive to be delightful. Female robots in *Shattered* are shown to have hips and chests that are large. It is a common misconception that beautiful women are. Despite the fact that these stereotypes can be harmful to women because they are vulnerable to both physical and non-physical sexual violence.*

Keywords: *gender bias, animation movie, women*

Introduction

According to Manssour Fakhri, humans with male sex are humans who have characteristics such as humans who have a penis and produce sperm. Women have reproductive organs such as the uterus and canals for giving birth, producing eggs, having vaginal organs, and having breastfeeding tools (1994: 8), meaning that these tools throughout human life will continue to be attached to humans of both male and female sex. female sex, these tools cannot be changed and exchanged because this is a biological provision which is God's or nature's provision.

Gender bias is caused by a lack of comprehension of the concept of gender. Gender bias typically arises from the stereotypical assumption that men and women are depicted in identical, unchanging, and frequently untrue physical appearances. Women are frequently referred to as the companion of their husbands, a source of information and legitimacy, gentleness, beauty, and refinement. In contrast, it is viewed by men as masculinity, dexterity, tenacity, bravery, determination, protector, and powerful—a woman's ideal. (Unconscious Gender in Workplace, 2017)

According to UNODC (United Nations Office on Drugs and Crime) in the book “Gender Dimensions Ethics” explain that there are four form of gender bias. That is Sexism, Implicit Bias, Sexual Harassment, and Sexual Assault. (Gender Dimensions Ethics, Module 9)

Since gender bias is a topic that gets a lot of attention, it spreads to other fields and even into literature. In his book *Consciousness and the Novel: Connected Essays*, David Lodge explains what literature means: “Literature is the richest and most comprehensive record of human consciousness. The verse is ostensibly man's best work to portray quality. The novel is arguably man's most successful effort to describe the experience of individual human beings moving through space and time” (2002:10). A novel is one of the literary works discussed. The novel is a book-length fictitious process narrative that typically depicts characters and events with some realism. Several novels that address gender issues include *Invisible Women: Exposing Data Bias in a World Designed for Men* by Caroline Criado-Perez, *Delusions of Gender* by Cordelia Fine, *Women Vs. Capitalism: Why We Can't Have It All in a Free Market Economy* by Vicky Pryce, *Gender Bias in Mystery and Romance Novel Publishing: Mimicking Masculinity and Femininity* by Anna Factorovich.

Animated Films are ones in which individual drawings, paintings, or illustrations are photographed frame by frame (stop-frame cinematography). Usually, each frame differs slightly from the one preceding it, giving the illusion of movement when frames are projected in rapid succession at 24 frames per second (Buchan, 2013).

Movies is regarded as one of the appropriate forms of media for addressing gender bias because it is a visual work that is frequently viewed by a large number of people. Just like this short animation movies; *Shattered*, *Witches*, and *Purl*. *Shattered* was uploaded in CGMeetup Youtube channel and Directed by Suyoung Jang. *Shattered* tell about a factory that builds humans, a new woman awakes to a flawed system. A giant glass wall stands in the way of achieving her potential.

Witches was uploaded in CGMeetup youtube channel and directed by Thibaut Vuillin. *Witches* is the most ambitious one and is a feminist tale on witch-hunt with a modern twist.

Purl, directed by Kristen Lester and produced by Gillian Libbert-Duncan, features an earnest ball of yarn named *Purl* who gets a job in a fast-paced, high energy, bro-tastic start-up. Yarny hijinks ensue as she tries to fit in, but how far is she willing to go to get the acceptance she yearns for.

Those short animation movies tell About women's experiences with gender discrimination. Throughout those movies, numerous scenes depict gender discrimination that women frequently face in the real world. Researchers are interested in studying gender bias through the three short animation movies because of the issues in the movies using gender bias and feminist theory. Based on the description above, the goal are set to follows: (1) To explain gender bias that occurred in *Shattered*, *Witches* and *Purl* short animation movies (2) To explain women struggle reflected in *Shattered*, *Witches* and *Purl* short animation movies.

Research Methodology

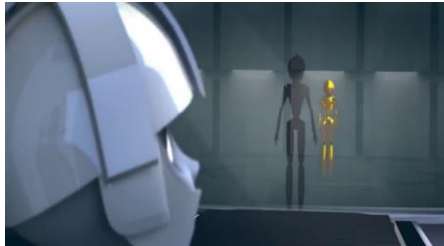
In this study, researcher analyses the movie "Shattered, Witches and Purl" using a contextual approach. This approach refers to various schools and methodologies that do not consider literary texts as independent and independent works of art but rather more comprehensive.

In order to analyse this research, the writer uses the theory of gender bias. Several steps will be conducted before analysing the data and they are as follows: First, the writer watches the short movies, reads the text of the film script, and

understands the topic of the problem. Secondly, the writer identifies the problem formulation, collects the appropriate theory, and looks for journals and references. After that, the researcher analysed the data based on gender bias theory. In the last step, the writer interprets the results of the data that has been analysed.

Finding and Discussion

Sexism in Shattered Short Animation Movie



Two pictures above shows a gate through which all robots will pass. The gate is used to eliminate robots that are viable. The perfect product will emerge from the robot that breaks through the gate and escapes. The robots that are unable to pass through the gate will then be discarded because they are regarded as a failed product.

Two robots are seen attempting to enter the existing gate in the two images above. A male robot is depicted in the first image as it passes through the gate and changes colour to yellow. Whereas a robot of female size cannot pass through the gate. This demonstrates that robots that are deemed to be good products are treated differently during the filtering process. Obviously, there is a bias against women in this situation. This exemplifies a form of gender bias that frequently affects women in the workplace, where they may be marginalized due to their gender.

Implicit Bias in Shattered Animation Movie

The picture above shows a random robot-making machine, both female and male. The robot that has been made has a difference in the symbol on the robot's chest. These two symbols are symbols that are usually used to distinguish between male robots and female robots. ♂ is a symbol to describe the male gender and ♀ is a symbol used to describe the female gender

The picture above shows the robot that has been made has a different symbol on its chest but also has a different physical form. The thighs of the two robots are different shapes, but the thighs and size of the male robots are

almost identical to those of typical male legs. However, the female robot's thighs appear to be very different from the male robot's. The female robot's thighs and buttocks appear to be quite large, revealing a sexy woman with large buttocks. The female robot's chest is also more prominent than the male robot's on the chest. It demonstrates a gender bias in the characters of robots, with the male robot being portrayed as a terrifying and masculine robot, whereas the female robot is portrayed as a pretty and attractive woman.

Sexism in Witches Animation Movie



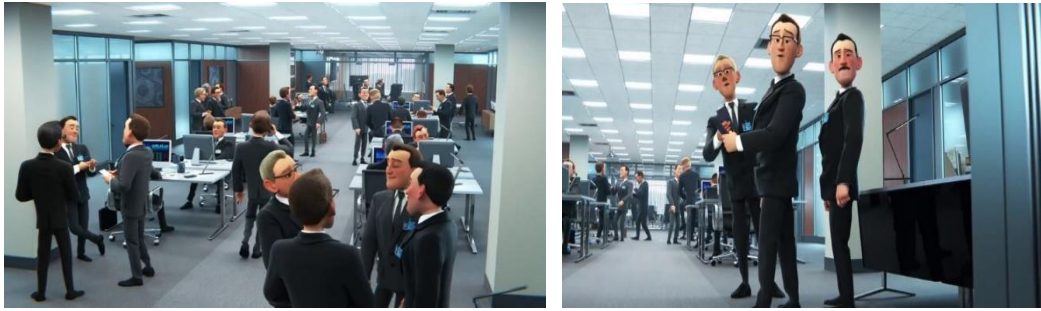
Mother : Agnes, everything went well?

Agnes : Yes, I've delivered Jane's baby tonight. It's a girl.

The quotation above shows a conversation that all family members participated in. A member of the family had just helped a woman who was pregnant give birth. When Agnes informed the family that a girl had been born, everyone's expressions immediately changed, and they all looked sad.

This scene demonstrates that being a woman is not a desirable quality. because of the family, which consists entirely of women, experiences difficulties as a result of their gender. It is a form of gender bias in which women are regarded as the second most dominant gender.

Sexism in Purl Short Animation Movie



The picture above shows office life. There are no female employees in the office, and it is evident that all of them are male. In their black suits and shoes, all of the current employees present a very professional and masculine appearance.

The picture above depicts actual office life at various businesses. Men have always dominated office work more than any other gender. This happens in light of the fact that the potential open doors for men to have the option to find a new line of work in that field are to be sure more noteworthy than for ladies. This is a bias against women that has existed for a long time. Women are frequently portrayed as homemakers who are in charge of their families' daily lives. Nevertheless, men work in more exclusive settings than women.

Implicit Bias in Purl Animation Movie



The first picture shows where a new employee will enter the new office. The new employee is a woman named *Purl*. And then the second picture above shows the first visible expression of the employees who are already working there, all of whom are men.

Gender bias that is prevalent in the workplace is depicted in the two images above. When a woman works in a place where men make up the majority of the workforce, she will be viewed as odd and unique, as depicted in the second picture above. Additionally, the new employees' attire and physique are significantly distinct from those of previous employees.

Women Struggle in Shattered Short Animation Movie



The picture above shows a filter gate prevents a robot bearing a female gender symbol from entering. Despite his continued efforts, he was unable to pass the gate.

The issue that female robots face is depicted in the picture. This picture is an image of women who frequently experience practices of orientation disparity. Women frequently face the greatest disadvantage as a result of gender inequality. despite the fact that the female robot in the image above does not have any physical differences or flaws. Because she was a woman, she was unable to enter the gate. She will automatically be lost among other robots that are unable to pass through the gate if he fails to do so. This serves as an illustration of how gender inequality causes women to be marginalized and to be regarded as unable to enjoy the same rights as men.

Women Struggle in Witches Short Animation Movie



The picture above shows the health experts of Celeste's family were hanged in front of the kingdom with many people watching. The wood that will be burned is tied to every woman in the family. Celeste, who was caught by the royal army after giving medicine to a boy, was the cause of it. Due to Celeste's

arrest, other members of her family are also detained. so that they all received punishment in front of the kingdom and in front of a lot of people.

It is a reflection of the weakness of a woman's strength. even though they have expertise in the health sector, they cannot get support from the community. It often happens where women are always below the male gender.

Women Struggle in Witches Short Animation Movie

The atmosphere during a meeting at the office can be seen in the image above at the gathering all representatives are given a piece of paper to comprehend what they will examine. All employees are expected to be able to respond to the discussion during the meeting. However, *Purl* was observed to be squeezed by two additional employees at the meeting.

It serves as an illustration of how women's voices will be difficult to accept during a meeting or discussion. Women who are unable to speak are frequently marginalized. Even in that scene, *Purl* tries to talk and say what he thinks about the issue that is being discussed. However, they are not heard and favour male employees' opinions. In the workplace, where women do not have the same opportunities as men, this practice is very common.

Conclusion

Shattered, *Witches* and *Purl* short animation movies refer to gender bias that makes women have less rights as men. Women are disproportionately impacted negatively by the practice of gender bias. Due to gender bias in society, the workplace, and other settings, women have always been disadvantaged. Women miss out on a lot of opportunities that should have gone to men because of gender bias. Men, on the other hand, hold the majority of the most diverse positions in the workplace, for instance. This unquestionably increases men's trust over women. When, in reality, everyone has the same chance.

Stereotypes that have existed for a long time contribute to gender bias. Women are referred to as feminists, while men are referred to as masculine. Such generalizations in some cases cause ladies to need to wear something attractive to be delightful. Female robots in *Shattered* are shown to have hips and chests that

are women because they are vulnerable to both physical and non-physical sexual violence.

References

- ACT/EMP. 2017. *Breaking barriers: Unconscious gender bias in the workplace*. International Labour Organization.
- Anne Cranny-Francis, W. W. (2003). *Gender Studies; Terms and Debates*. UK: palgrave macmillan.
- ATTEBERY, B. 2002. *Decoding Gender in Sience Fiction*. New York : Routledge .
- Buchan, S. 2013. *Pervasive Animation*. New York and London: Routledge.
- Chamberlain, P. 2017. *The Feminist Fourth Wave*. Cham, Switzerland: Springer Nature.
- Chaudhuri, S. 2006. *Feminist Film Theory*. Routledge.
- Jang, S. (Director). 2019. *Shattered* [Motion Picture].
- Johnson, H. C. 2020. Racism and Sexism in Superhero Movies: Critical Race Media Literacy in the Korean High School Classroom. *International Journal of Multiculture Education*, 66-86.
- Lester, K. (Director). 2019. *Purl* [Motion Picture].
- Masson, T. 1999. *A Computer Graphics Industry Reference*. Digital Fauxtography Inc.
- Rahayu, A. M. (n.d.). GENDER INEQUALITY ANALYSIS OF THE MAIN FEMALE CHARACTER IN NIKI CARO'S MULAN MOVIE: A FEMINISM STUDY. *Dinamika Bahasa dan Budaya: Jurnal pengembangan ilmu Bahasa dan Budaya*,
- UNODC. 2017. *Gender Dimensions of Ethics*. Vienna.
- Vuillin, F. f. (Director). 2022. *Witches* [Motion Picture].